



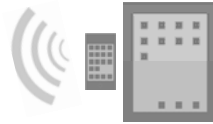
# QRS PNOmation II - How To...

## Setup the ASUS Wireless for PMII in Stand-Alone Mode



ASUS Wireless set as Access Point (AP)

### Default Configuration Set by QRS



Wireless:  
Computer  
or  
Smart Phone  
or  
Tablet PC

No internet access

IP Address 192.168.1.1 is assigned by PMII

Disconnect the Ethernet cable from the PMII unit.

Using the QRS Remote Control: Press SOURCE then PROGRAM then 9 9 0.

Wait for the Network light on the PLx box to turn Green.



Power System Network Mode MIDI AMI

Unplug the two cables and remove the ASUS wireless device from the piano.

Connect one end of an Ethernet cable into the ASUS Wireless

Connect the other end of the Ethernet cable into your computer

Connect the ASUS to the computer's USB port for power. *A USB to power plug cable is provided with our system.*

Confirm that the ASUS "power" LED is ON.

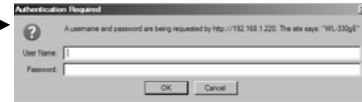
Press and hold the "reset" button until the "power" LED flashes a few times, then release the button.

Wait until the "power" button stops flashing. ["Reset" is the small recessed button next to the power jack]

Enter 192.168.1.220 in the address window of your computer's web browser

*If unsuccessful disconnect and then reconnect power to ASUS*

The "Authentication Required" dialog box should appear.



Enter admin in the User Name field and admin in the Password field.

Click the OK button.

The ASUS programming window opens.



Click on the AP tab.

Enter the SSID name that you want to see when you connect to the AP

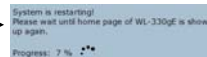
from your wireless device. Our example uses ASUSQRS AP

Click the FINISHED button.

Click OK



The ASUS will save and restart with the new settings



Close the browser window when this blue box closes.

Disconnect the Ethernet cable from your computer and plug it into the PNOmation II Ethernet port.

Disconnect the ASUS from power and then reconnect.

You can now wirelessly connect to PNOmation II via the ASUS wireless access point..

Enter QRSPNO [192.168.1.1/qrs] in your Internet web browser.